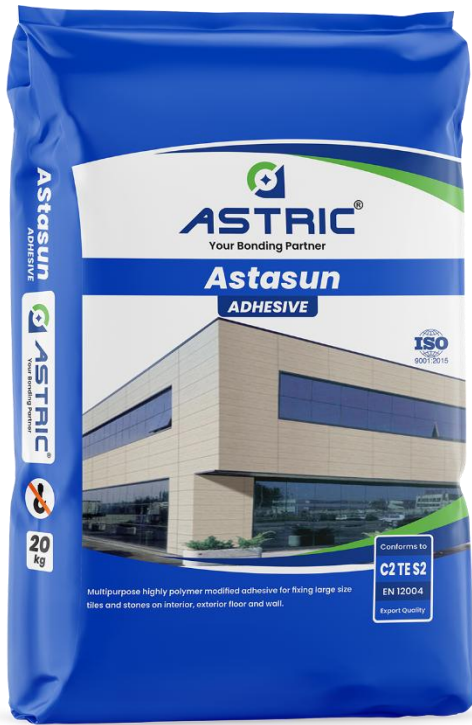


## TECHNICAL DATA SHEET

### ASTRIC® ASTASUN



#### ASTRIC® "ASTASUN" MULTIPURPOSE LFT ADHESIVE

A highly polymer-modified and highly flexible adhesive for installation of large format/slim tiles on most of the substrates to accommodate movements, It offers very good handling properties with good sag and slump resistance while doing Installation on wall or floor respectively. It can be applied up to 15 mm bed thickness.

#### APPLICATION

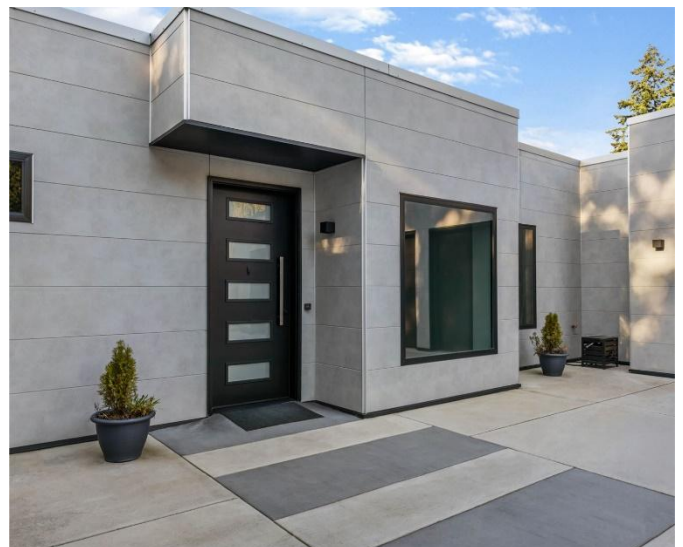
Designed especially for interior and exterior floor and wall installations of all types of ceramic tile. vitreous, semi- vitreous tile, paper faced glass mosaic tiles, precast terrazzo and (ALL SIZE) natural stones over concrete and on a variety of substrates. Good underwater shear bond allows this product to be used for wet areas like swimming pools, sauna. water bodies and washrooms. Can be used for tile on tile applications and as slurry bond adhesive in wet on wet applications

#### ADVANTAGES

- For fixing extra large format tiles & thin body tiles, natural granite & marble stone on demanding internal & external applications.
- Non-slump adhesive with a bed thickness up to 15mm
- Cream & non sag formula for easier installation on floor and wall.
- Highly flexible, lightweight formula. More than 15% higher coverage than standard adhesive.

#### SUITABLE SUBSTRATES

- Slim porcelain large format tiles Vitreous
- Semi-vitreous or non-vitreous tiles
- Ceramic
- Quarry
- Cement body tile
- Brick
- Cement based precast terrazzo
- Natural granite & marble stone



## TECHNICAL DATA

### Performance Properties:

### ASTRIC® ASTASUN

### Application Standards:

EN:12004/ISO 13007:C2TE S2, TYPE 4 ADHESIVE

EN/ISO Data		
Property: Test Method	Requirement	Typical Values
Slip Resistance: EN 1308	$\leq 0.50$ N/mm <sup>2</sup>	$\geq 0.25 - 0.30$ N/mm <sup>2</sup>
Open Time: EN 1346	$\geq 0.50$ N/mm <sup>2</sup>	20 - 30 Minutes
Tensile Adhesion Strength		
After Water Immersion: EN 1348 – Clause 8.3	$\geq 2.00$ N/mm <sup>2</sup>	$\geq 2.00 - 2.70$ N/mm <sup>2</sup>
Initial: EN 1348 – Clause 8.2	$\geq 2.00$ N/mm <sup>2</sup>	$\geq 2.00 - 2.30$ N/mm <sup>2</sup>
Freeze – Thaw : EN 1348 – Clause 8.5	$\geq 2.00$ N/mm <sup>2</sup>	$\geq 2.30 - 2.50$ N/mm <sup>2</sup>
Heat Ageing: EN 1348 – Clause 8.4	$\geq 2.00$ N/mm <sup>2</sup>	$\geq 2.30 - 2.50$ N/mm <sup>2</sup>
Transverse Deformation: EN12002	$> 5.00$ mm	$> 5.20$ mm

### Packaging:

20 kg

### Colour:

Grey & White

### Working Properties at 70°F (23°C):

ASTASHEEL+ C2 TE S2

Pot life	2 – 3 Hours
Time to Heavy Traffic	16 – 24 Hours
Open Time	20 - 30 Minutes
Adjustability Time	45 Minutes

Specifications may change without prior notice. The displayed results are typical and based on test procedures; field performance will vary depending on installation techniques and site conditions.

The Adhesive mortar conforms to EN12004 / ISO 13007 as C2TES2 Adhesive.

### Coverage Details (per 20kg bag:)

Trowel Size	Average Bed Thickness	Minimum Coverage	Maximum Coverage
6 × 6 mm Square Notch	3 mm	50 ft <sup>2</sup> / 4.65m <sup>2</sup>	55 ft <sup>2</sup> / 5.11m <sup>2</sup>
9 × 9 mm Square Notch	4.5 mm	35 ft <sup>2</sup> / 3.25m <sup>2</sup>	40 ft <sup>2</sup> / 3.71m <sup>2</sup>
12 × 12 mm Square Notch	6 mm	30 ft <sup>2</sup> / 2.79m <sup>2</sup>	32 ft <sup>2</sup> / 2.97m <sup>2</sup>
18 × 18 mm Square Notch	9 mm	20 ft <sup>2</sup> / 1.85m <sup>2</sup>	22 ft <sup>2</sup> / 2.04m <sup>2</sup>
6 mm surface levelling + 12 × 12 mm square Notch	12 mm	15 ft <sup>2</sup> / 1.39m <sup>2</sup>	17 ft <sup>2</sup> / 1.58m <sup>2</sup>

\*Coverage will vary depending on the type of size of tiles: substrate smoothness and unevenness.

## Installation Guide for ASTRIC® ASTASUN

To achieve a successful installation of very large format/thin tiles, follow these recommendations:

1. **Proper surface preparation**
2. **Proper material mixing & application**
3. **Use of an edge-leveling system**
4. **Beating of the tile into the mortar bed using a rubber mallet**

### Surface Preparation:

- Ensure all surfaces are structurally sound, clean, and free of dirt, oil, grease, loose paint, laitance, concrete sealers, or curing compounds.
- Proper surface preparation is crucial. Remove any demolding wax powder from the back surface of the tile. If a fiber mesh is present on the back surface, ensure it is completely removed before proceeding with the installation using ASTRIC® ASTASUN.

### Bonding to Concrete Surfaces:

- Concrete or plaster must be fully cured and able to absorb water. Test by sprinkling water on various areas; if absorbed, a good bond can be achieved. If water beads, surface contaminants must be removed mechanically before installation.
- Concrete must be free of efflorescence and not subject to hydrostatic pressure. Concrete slabs should have a coarse finish to enhance the bond. Smooth concrete slabs must be mechanically abraded to improve the bond with the adhesive mortar.

### Bonding to Cutback Adhesive:

- Remove hardened adhesive parts, as they reduce mortar bond strength. Never use adhesive removers or solvents, as they may soften the adhesive and cause it to penetrate the concrete. Adhesive residue must be wet scraped to the finished surface of the concrete. Perform a test bond area before starting the installation process.

## Material Preparation & Application:

### Mixing Procedure:

- Place clean, potable water into a clean mixing bowl. Add ASTRIC® ASTASUN Super Flex powder. Use approximately 5.5–6 L of water for 20 kg of powder. Mix with a low-speed paddle drill to achieve a smooth, paste-like consistency. Let the mixture stand for 5-10 minutes, then stir again before use. Stir occasionally without adding more water. Properly mixed, troweled ridges should stand without slump.

### Mixing Ratios:

- Mix 5.5-6 L of clean water with a 20 kg bag of mortar.

### Application of Product:

#### Tile/Stone:

- Use a properly sized notch trowel for proper coverage under tiles. Apply a skim coat of mortar to the surface with the flat side of the trowel. Apply additional mortar with the notched side at a 45° angle, combing in one direction. Press the tile firmly into place with a perpendicular motion across ridges. Back-buttering is mandatory for all large format tiles. Recomb with the notch trowel if the material has skinned over; replace dry material with fresh if too dry. Do not use adhesive mortar to fill low spots in the flooring.

#### Paper faced Glass Mosaic tiles

- To install Paper Faced Glass Mosaic tiles, apply ASTRIC® ASTASUN adhesive to the surface with a notched trowel, ensuring good contact by using a scraping motion. A 4 mm notched trowel is recommended for achieving a bed thickness of 1.5-2 mm, while a 3 mm V-notch trowel can also be used to get a bed thickness of 1.5 mm. Apply only as much adhesive as can be covered with tile within 10-15 minutes or while the adhesive is still tacky. Set the Glass Mosaic tiles in place, gently beating them with a mallet or grouting float to ensure 100% full

bedding. Align the tiles to achieve uniform joints and allow them to set until firm. Once the tiles are set, dampen the face of the sheets of front paper-mounted glass mosaic tiles to remove the face mount paper.

- NOTE: All glass mosaics with mesh backing should be installed using a resin-based adhesive like PU

#### **Note to Specifier and Installer:**

- Verify whether the chosen adhesive mortar is suitable for tile installation by considering the following factors:
  - Type of Substrate
  - Size of Tile
  - Type of Tile
  - Area of Application

#### **Use of a Mechanical Edge-Leveling System:**

- Mechanical edge-leveling systems or clamps help reduce lippage and align tile edges, minimizing lippage to zero in many cases.

#### **Beating of Tile into Mortar Bond Coat:**

- Lightly beat the tile surface with an orbital sander, starting from the center and working outwards.

#### **Cleaning of Equipment:**

- Clean all tools with water before the material dries.

#### **Storage:**

- Store in a cool, dry area.

#### **CUSTOMER CARE :**

##### **ASTRIC® INDUSTRIES**

Web: <http://www.astricindustries.com>

Mail: [info@astricindustries.com](mailto:info@astricindustries.com)

Call: +91 99799 73232